

THE VALUE AND IMPACT OF ILLINOIS PRIMARY HEALTH CARE ASSOCIATION

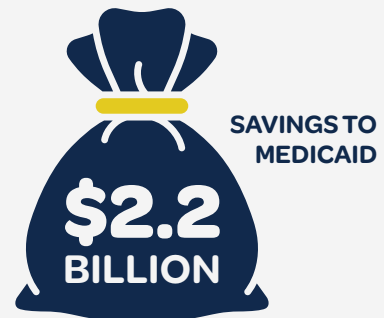
Fifty-Three Illinois Primary Health Care Association health center members provide tremendous value and impact to the communities they serve through care for vulnerable populations, savings to the system, economic stimulus, state-of-the-art practices, and integrated care with a focus on managing chronic conditions, preventative care, and quality health outcomes. This report highlights their 2023 savings and contributions.

Savings to the System



SAVINGS TO THE OVERALL
HEALTH SYSTEM

24%
LOWER COSTS
FOR HEALTH CENTER
MEDICAID PATIENTS



SAVINGS TO
MEDICAID

Economic Stimulus



\$90.7
MILLION
STATE & LOCAL
TAX REVENUES



\$355.6
MILLION
FEDERAL TAX
REVENUES



\$446.3
MILLION
ANNUAL TAX
REVENUES

\$3.6
BILLION

TOTAL ECONOMIC
IMPACT OF CURRENT
OPERATIONS



\$1.8
BILLION
DIRECT HEALTH
CENTER SPENDING



11,748
HEALTH
CENTER JOBS



9,732
OTHER JOBS
IN THE COMMUNITY

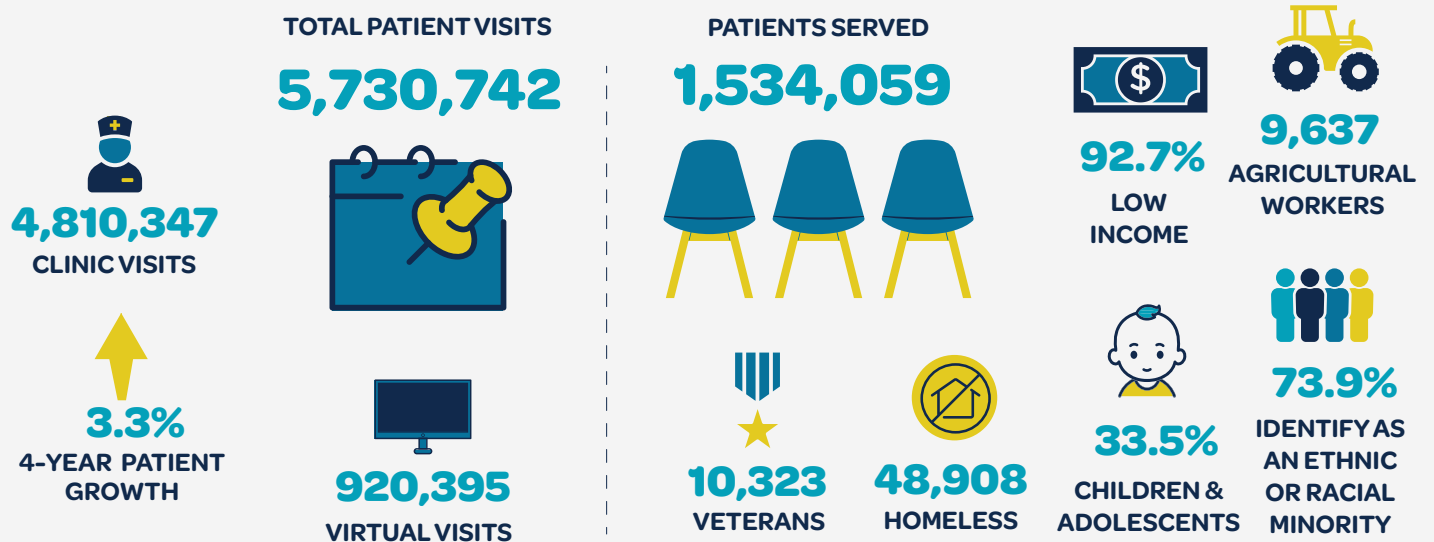


21,480
TOTAL JOBS
CREATED

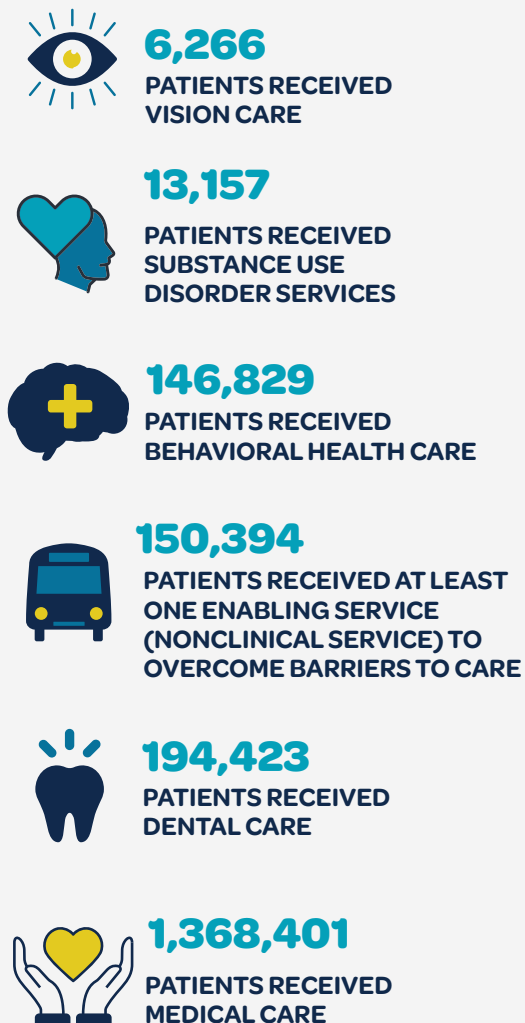


\$1.8
BILLION
COMMUNITY
SPENDING

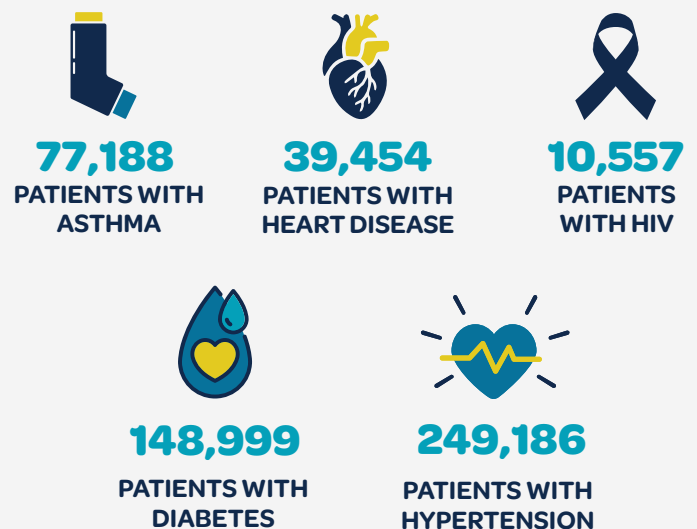
Care for Vulnerable Populations



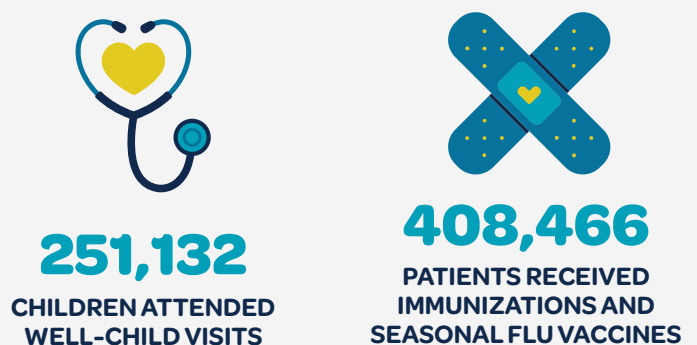
Integrated Care



Managing Chronic Conditions



Preventative Care



References & Data Sources

- Savings to the System: Nocon et al. Health Care Use and Spending for Medicaid Enrollees in Federally Qualified Health Centers Versus Other Primary Care Settings. American Journal of Public Health: November 2016, Vol. 106, No. 11, pp. 1981-1989.
- Economic Stimulus: Economic impact was measured using 2023 IMPLAN Online from IMPLAN Group LLC, IMPLAN System (data and software), 16905 Northcross Dr., Suite 120, Huntersville, NC 28078, www.IMPLAN.com. Learn more at www.caplink.org/how-economic-impact-is-measured.
- “Low Income” refers to those with earnings at or below 200% of federal poverty guidelines.
- Care for Vulnerable Populations: Bureau of Primary Health Care, HRSA, DHHS, 2023 Uniform Data System.
- Full-Time Equivalent (FTE) of 1.0 is equivalent to one full-time employee. In an organization that has a 40-hour work week, an employee who works 20 hours per week (i.e., 50 percent of full time) is reported as “0.5 FTE.” FTE is also based on the number of months the employee works. An employee who works full time for four months out of the year would be reported as “0.33 FTE” (4 months/12 months).
- COVID tests and vaccines data comes from data reported by health centers from the HRSA Health Center COVID-19 Survey. Learn more at <https://bphc.hrsa.gov/emergency-response/coronavirus-health-center-data>.

Acknowledgements

This report was created by Capital Link and funded by Illinois Primary Health Care Association for its members.

Capital Link is a non-profit organization that has worked with hundreds of health centers and primary care associations for nearly 30 years to plan for sustainability and growth, access capital, improve and optimize operations and financial management, and articulate value. We provide an extensive range of services, customized according to need, with the goal of strengthening health centers—financially and operationally—in a rapidly changing marketplace.

Capital Link maintains a database of over 21,000 health center audited financial statements from 2005 to 2023, incorporating nearly 85% of all health centers nationally in any given year. This proprietary database also includes UDS data from 2005 through 2023, enabling us to provide information and insights tailored to the industry.

For more information, visit us at www.caplink.org.

Health Centers Included in this Analysis

1. Access Community Health Network
2. AHS Family Health Center, Inc.
3. Alivio Medical Center
4. Aunt Martha's Health and Wellness
5. Beloved Community Family Wellness Center
6. Cass County Health Department
7. Central Counties Health Centers, Inc.
8. Chestnut Health Systems
9. Chicago Family Health Center
10. Christian Community Health Center
11. Christopher Rural Health Planning Corporation
12. Community Health & Emergency Services, Inc.
13. Community Health Care, Inc.
14. Community Health Centers of Southeastern Iowa
15. Community Health Partnership of Illinois
16. Crossing Healthcare
17. Crusaders Community Health
18. Eagle View Community Health
19. Erie Family Health Centers
20. Esperanza Health Centers
21. Family Christian Health Center
22. Friend Health
23. Grand Prairie Services
24. Greater Family Health
25. Hamdard Health Alliance
26. Haymarket Center
27. Heartland Alliance Health
28. Heartland Health Services
29. Howard Brown Health
30. Inner-City Muslim Action Network (IMAN)
31. IWS Family Health
32. Knox County Health Department
33. Lake County Health Department/Community Health Center
34. Lawndale Christian Health Center
35. Legacy Medical Care, Inc.
36. Macoupin County Public Health Department
37. Mile Square Health Center
38. Near North Health
39. PCC Community Wellness Center
40. Pillars Community Health
41. Preferred Family Healthcare
42. PrimeCare Community Health
43. Promise HealthCare
44. Rural Health, Inc.
45. Shawnee Health
46. SIHF Healthcare
47. SIU Center for Family Medicine
48. Tapestry 360 Health
49. TCA Health, Inc.
50. VNA Health Care
51. Wabash Community Health Center
52. Whiteside County Community Health Clinic
53. Will County Community Health Center